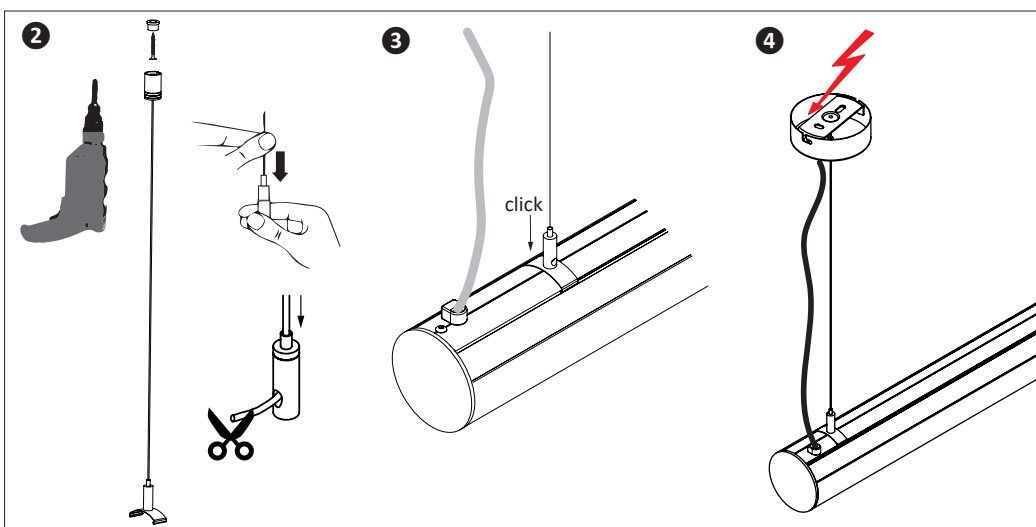
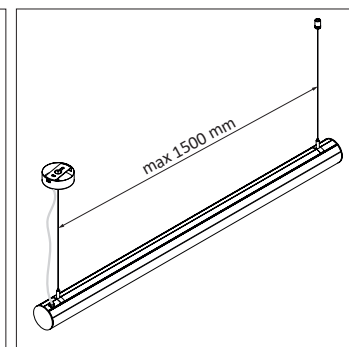
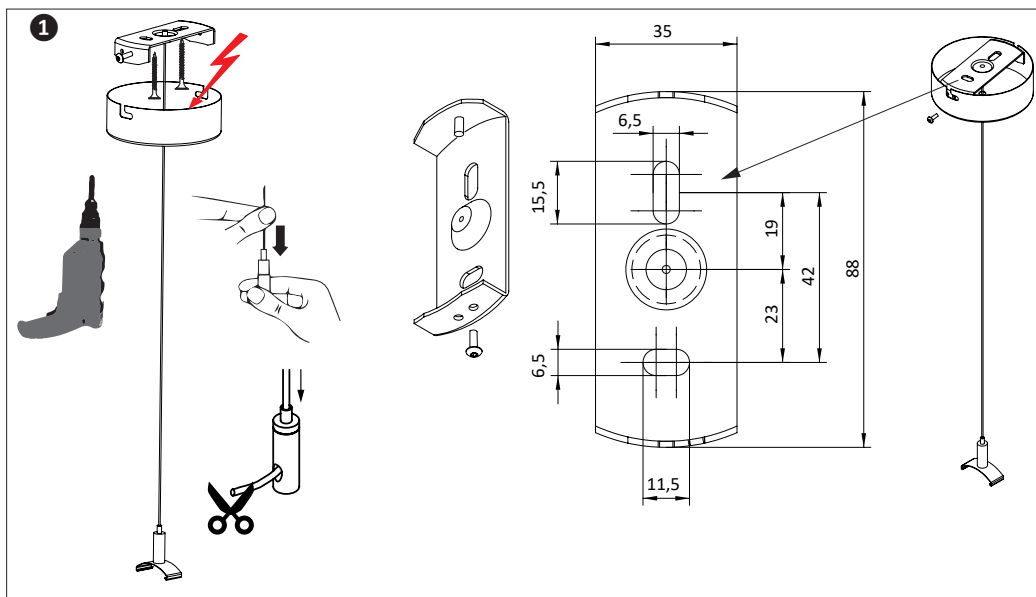




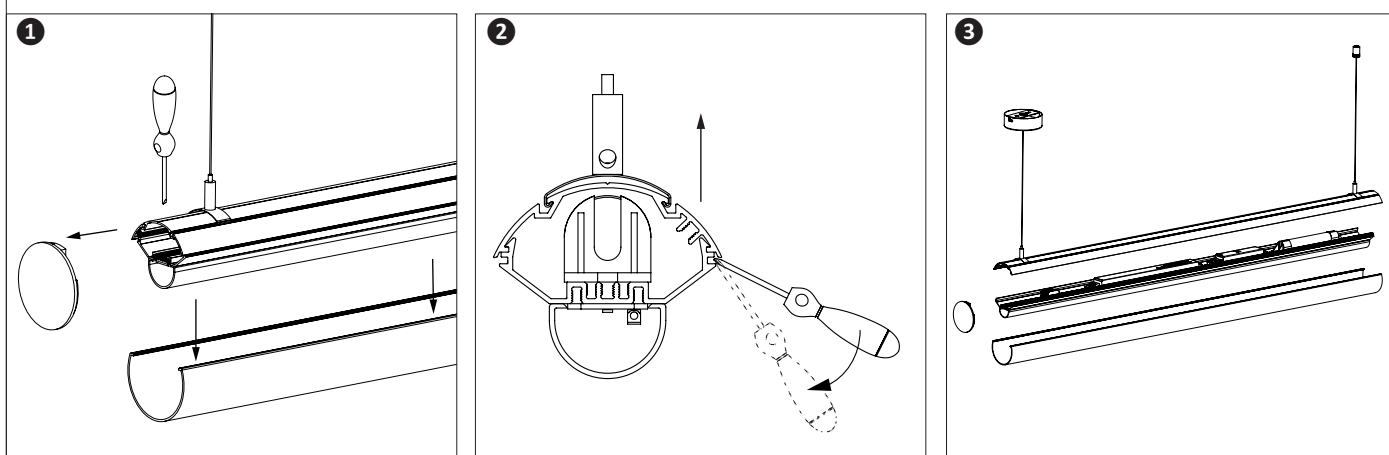
Diese Leuchte enthält eine Lichtquelle der Energieeffizienzklasse  
This lamp contains a light source of energy efficiency class

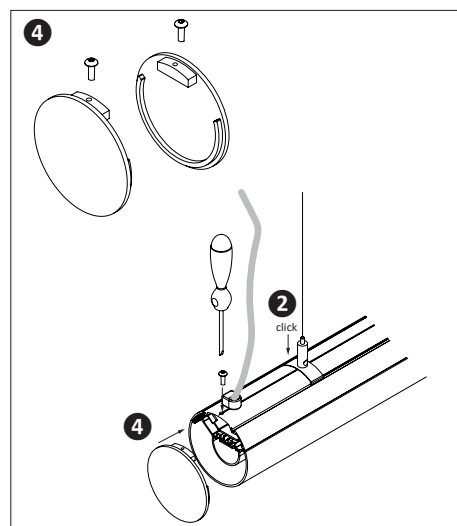
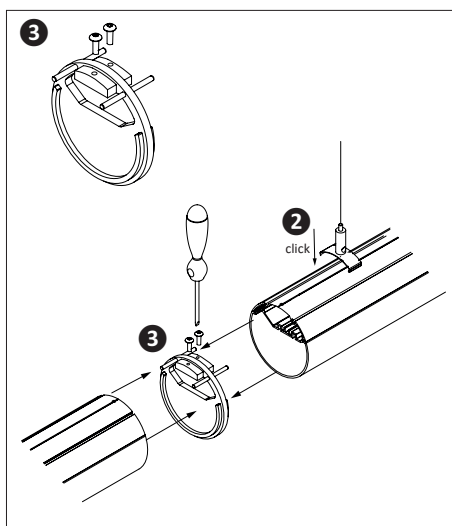
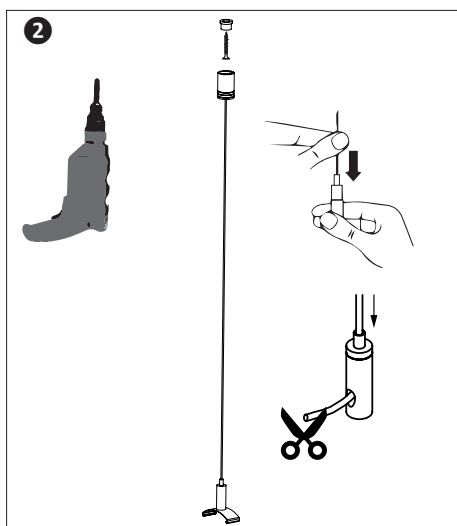
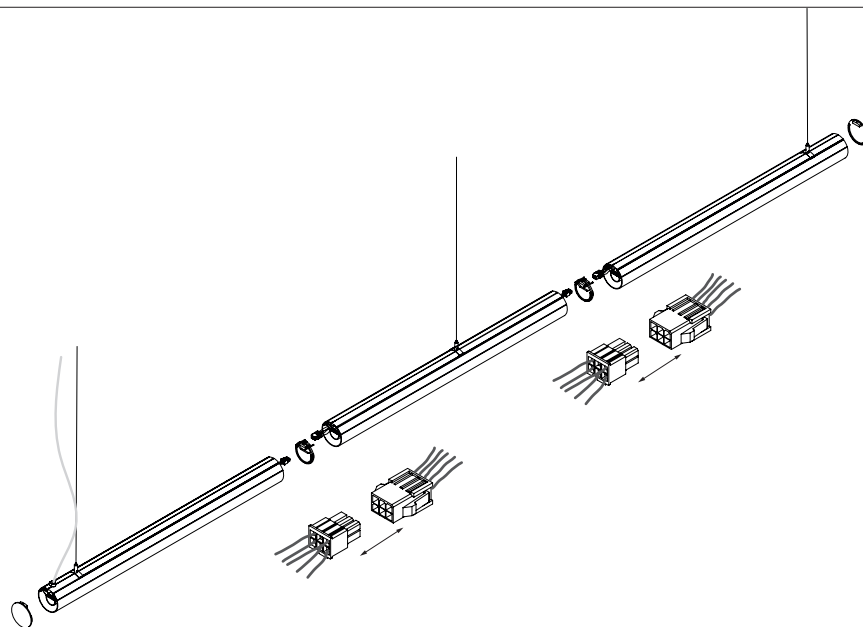
C

155-XXXX-XXX-XXX 155-001-XXX 155-002-XXX



## DEMONTAGE | DISMANTLING





Klemme   Terminal	Farbe   Colour	Kabel   Cable	schaltbar   switchable	2-fach schaltbar   fold switchable	Notlicht 1h/3h Batterie schaltbar   EM light with 1h/3h battery switchable	5-polige Anschlussklemme   5-pin connection cable
3	L	weiß oder grau   white or grey	(A) Netz geschaltet   switched supply	direkter Lichtanteil   direct light		
	N	blau   blue	(N) Neutralleiter   neutral	Neutralleiter   neutral	Neutralleiter   neutral	
		grün-gelb   green-yellow	(PE) PE   ground	PE   ground	PE   ground	
1	D+	schwarz   black	(C)		Netz   mains	
2	D-	braun   brown	(B)	indirekter Lichtanteil   indirect light	Netz geschaltet   switched supply	
Klemme   Terminal	Farbe   Colour	Kabel   Cable	DALI	1-10 V	Notlicht 1h/3h Batterie & DALI   EM light with 1h/3h battery & DALI	
L	weiß oder grau   white or grey	(A) Netz   mains	Netz   mains	Netz   mains	Netz   mains & charging battery	
N	blau   blue	(N) Neutralleiter   neutral	Neutralleiter   neutral	Neutralleiter   neutral	Neutralleiter   neutral	
	grün-gelb   green-yellow	(PE) PE   ground	PE   ground	PE   ground	PE   ground	
D1+ DA+ D+	schwarz   black	(C) DALI	DALI	+ Pol 1-10 V	DALI	
D2- DA- D-	braun   brown	(B) DALI	DALI	- Pol 1-10 V	DALI	

**D** Beiliegende Sicherheitshinweise sind unbedingt einzuhalten. Technische Änderungen vorbehalten. Montageanleitung aufbewahren.

**GB** The enclosed directions for safety must be observed. We reserve the right to make technical modifications. Retain the operating instructions.

**F** Le respect des instructions de sécurité ci-jointes est impératif. Sous réserve de modifications techniques. Conserver le mode d'emploi.

**NL** De bijgevoegde veiligheidsinstructies moeten in acht genomen worden. Technische wijzigingen voorbehouden. Bewaar de gebruiksaanwijzing.

**E** Deben observarse las instrucciones de seguridad adjuntas. Cambios técnicos reservados. Conserve las instrucciones de montaje.

**I** Osservare le segnalazioni di sicurezza allegate. Modifiche tecniche riservate. Conserva le istruzioni di montaggio.

**S** Bifogade säkerhetsanvisningar måste beaktas noggrant. Tekniska ändringar förbehålles. Spara bruksanvisningen.

**TR** Ekteki Emniyet Kurallarına kesinlikle uyunuz. Teknik değişiklikler saklıdır. Montaj talimatlarını saklayın.