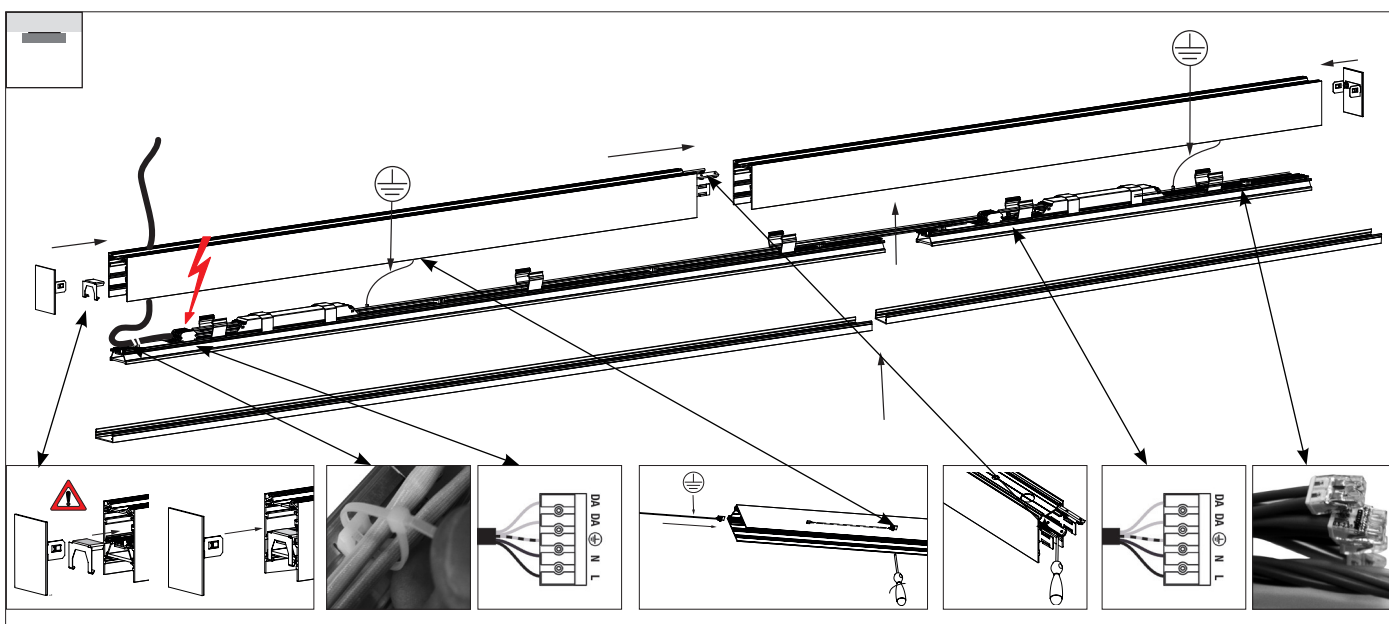
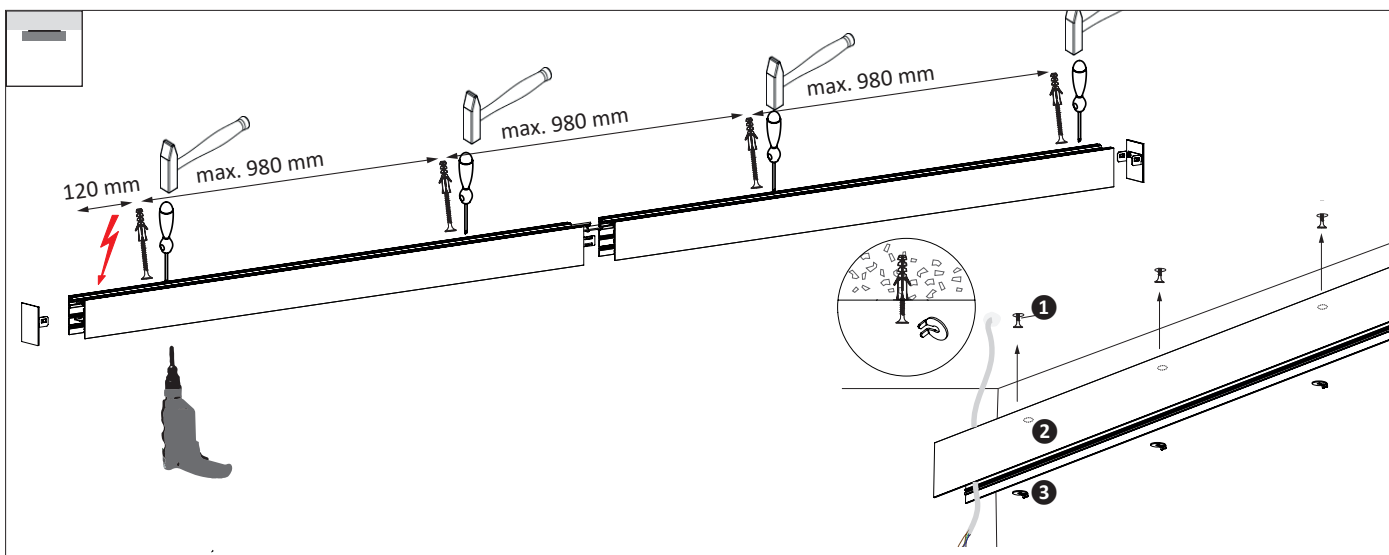
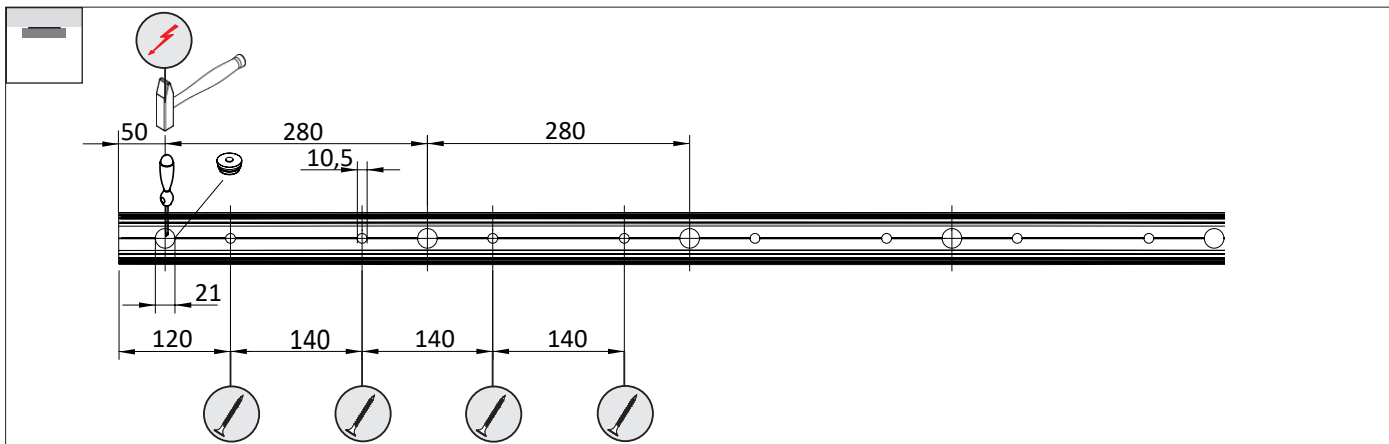
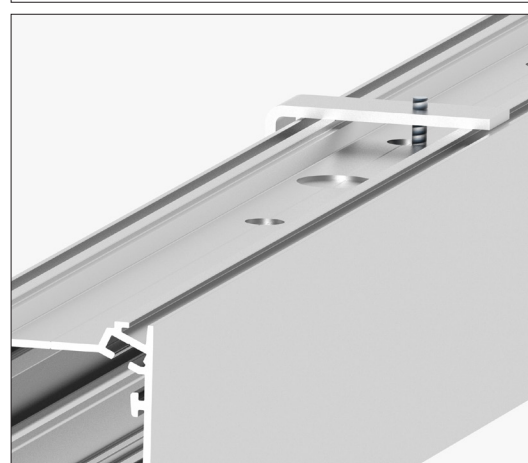
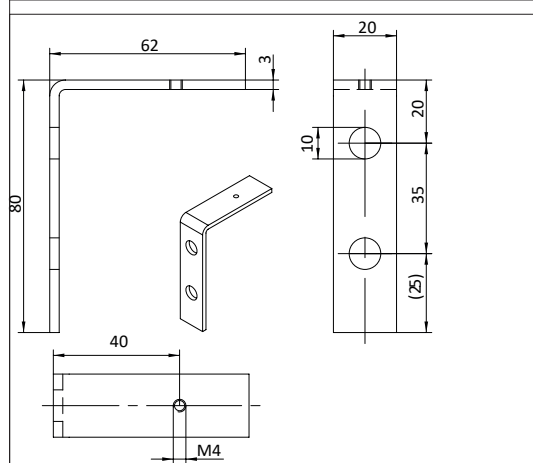
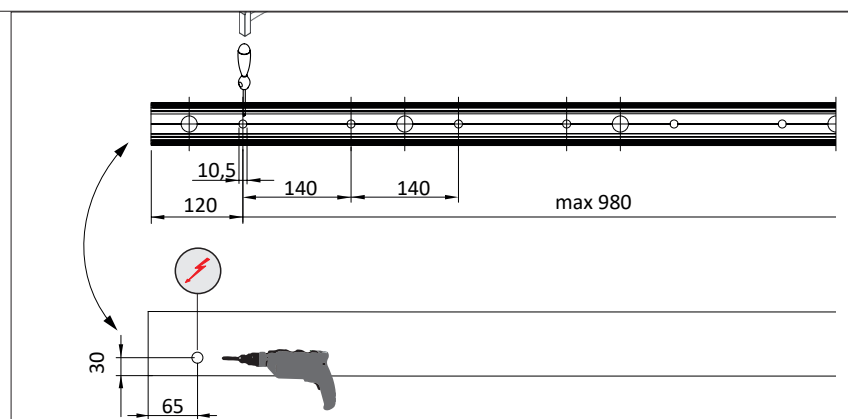
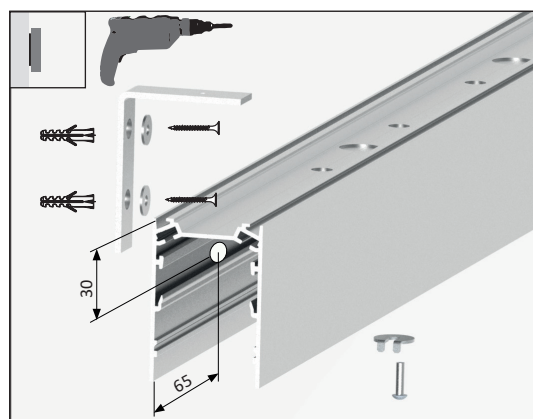
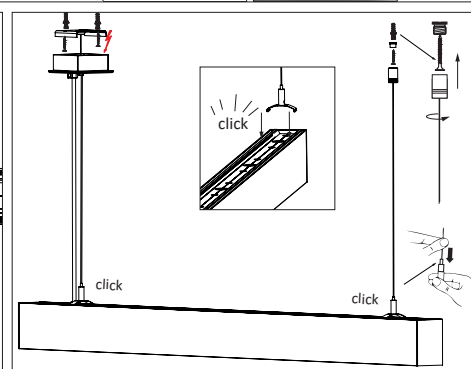
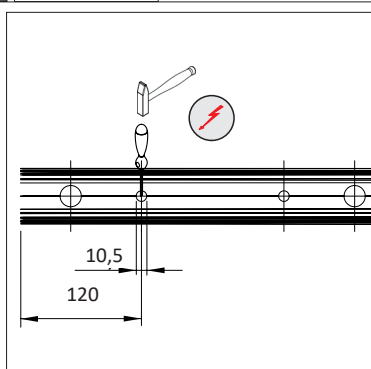
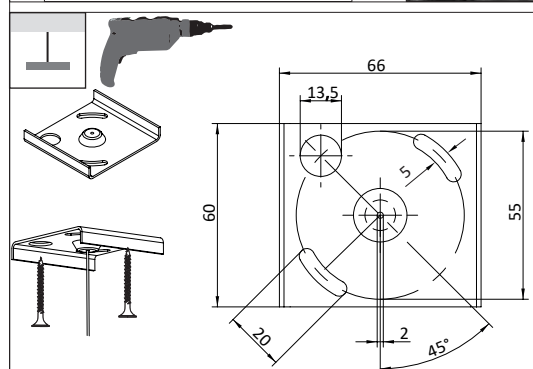
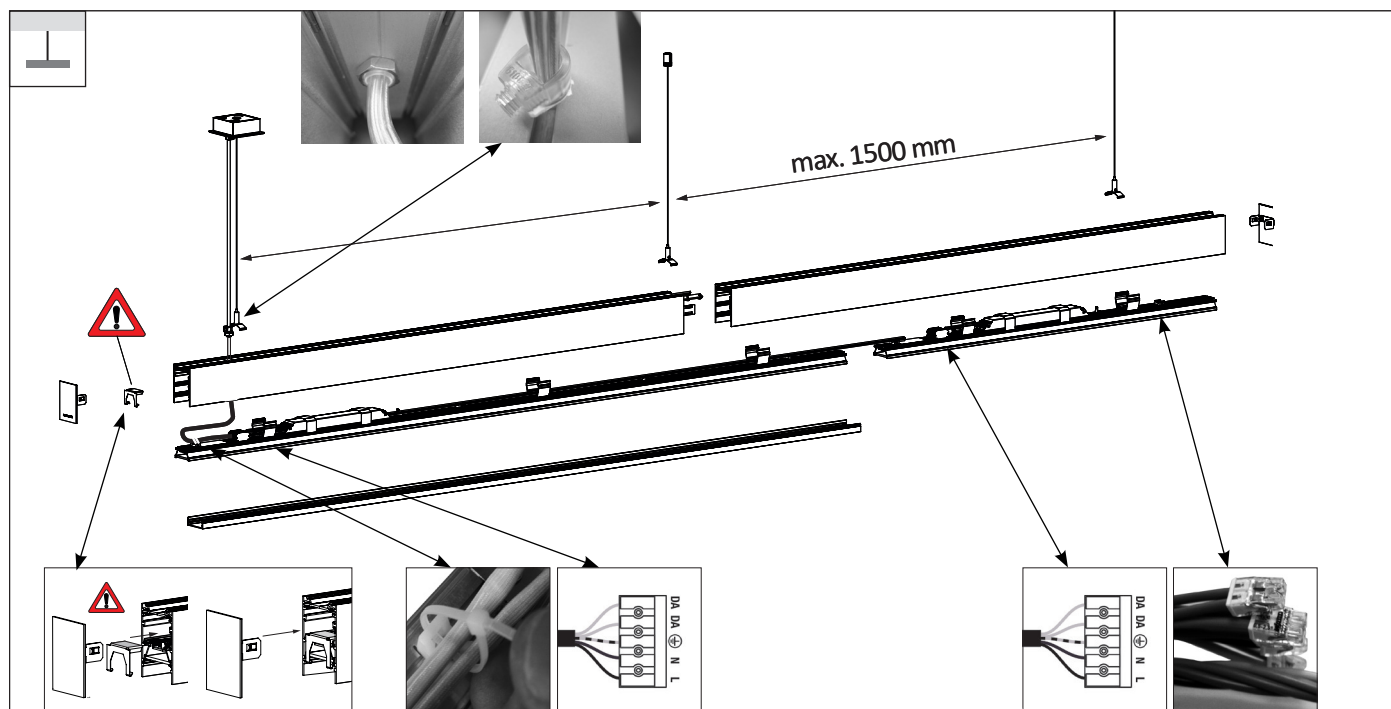
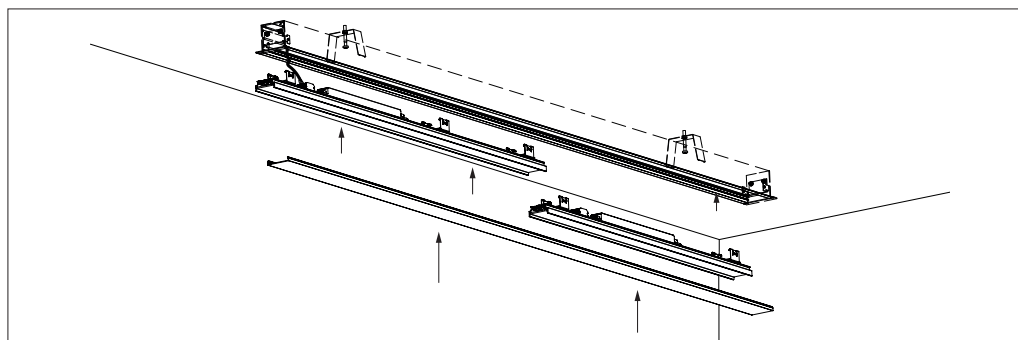
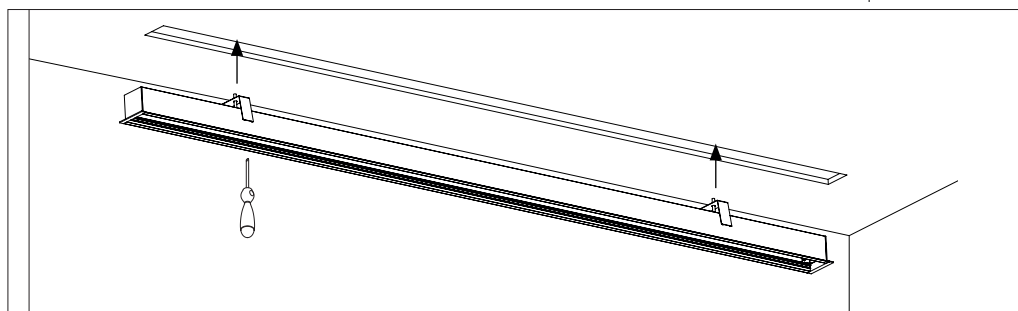
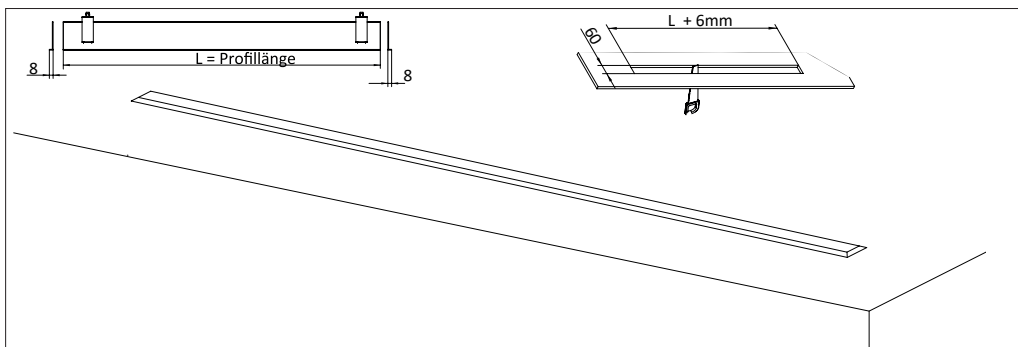
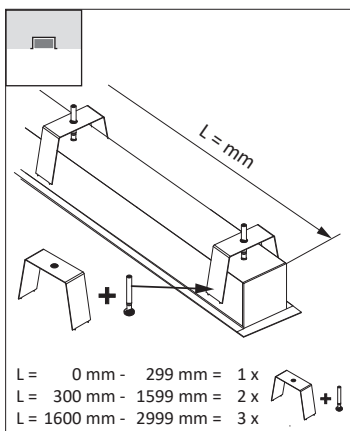
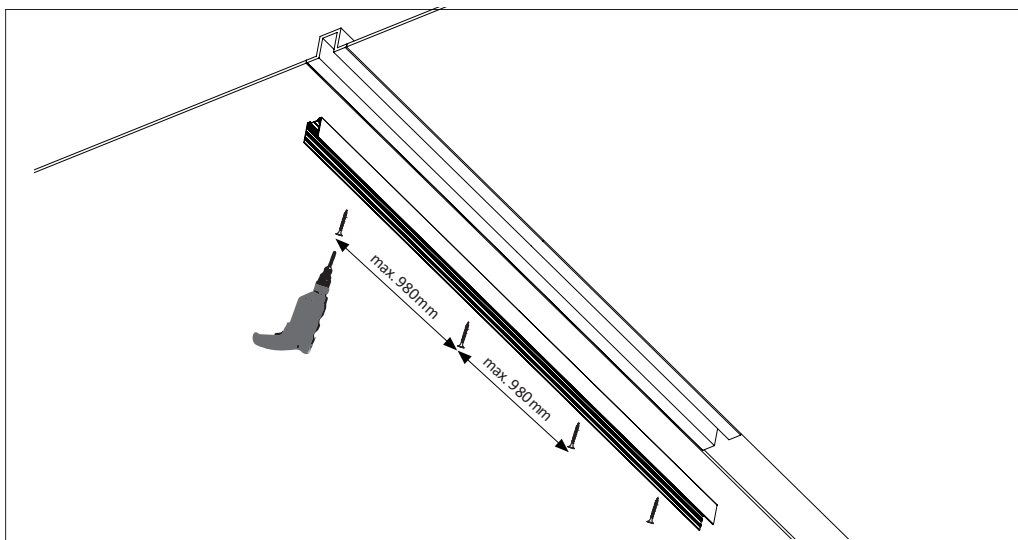
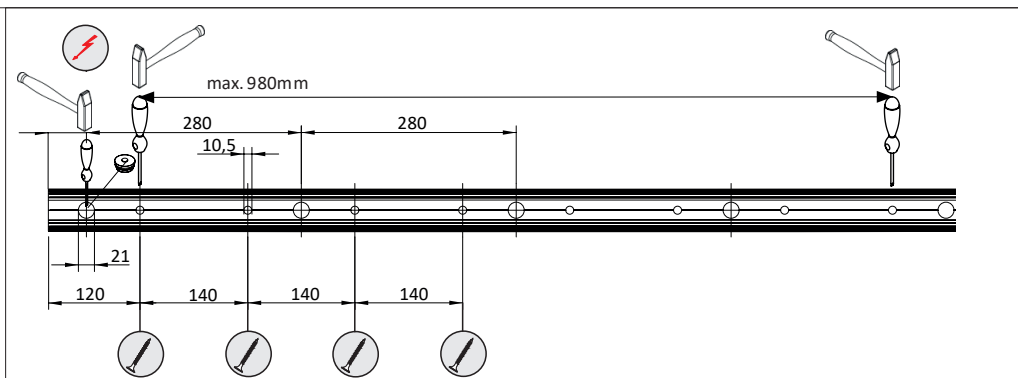
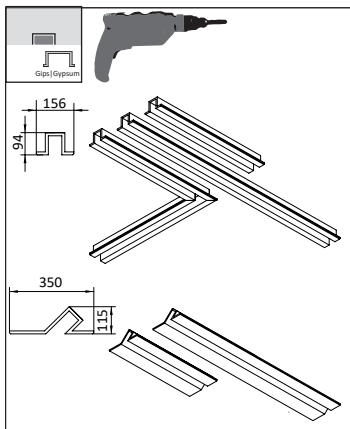


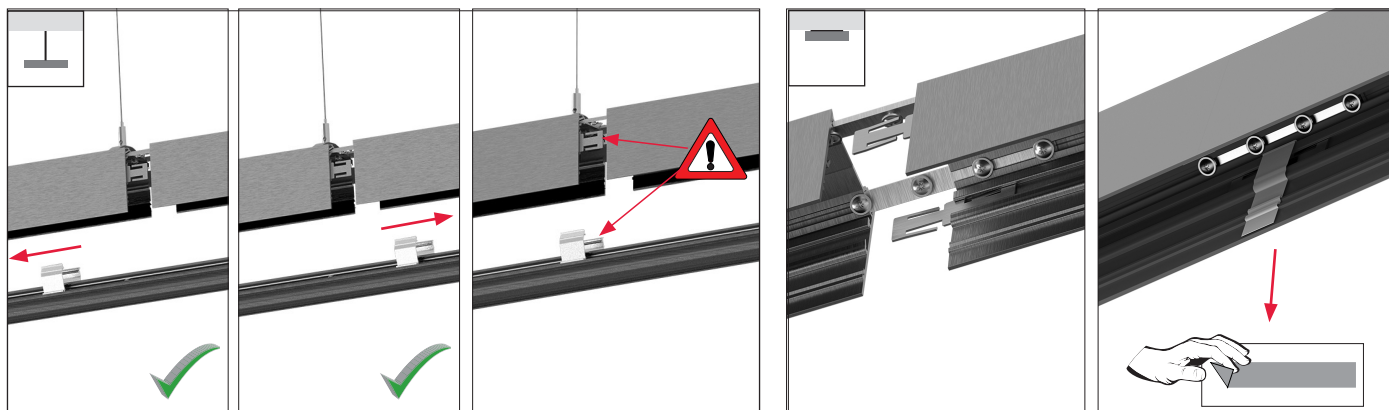
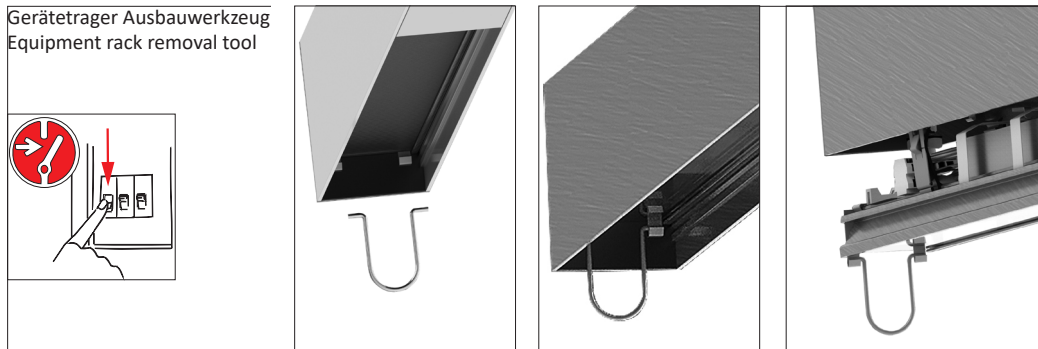
Diese Leuchte enthält eine Lichtquelle der Energieeffizienzklasse C
This lamp contains a light source of energy efficiency class C

C








Geräteträger Ausbauwerkzeug
Equipment rack removal tool


Klemme Terminal	Farbe Colour	Kabel Cable	schaltbar switchable	2-fach schaltbar fold switchable	Notlicht 1h/3h Batterie schaltbar EM light with 1h/3h battery switchable	5-polige Anschlussklemme 5-pin connection cable
3	L	weiß oder grau white or grey	(A) Netz geschaltet switched supply	direkter Lichtanteil direct light		
	N	blau blue	(N) Neutralleiter neutral	Neutralleiter neutral	Neutralleiter neutral	
		grün-gelb green-yellow	(PE) PE ground	PE ground	PE ground	
1	D+	schwarz black	(C)		Netz mains	
2	D-	braun brown	(B)	indirekter Lichtanteil indirect light	Netz geschaltet switched supply	
Klemme Terminal	Farbe Colour	Kabel Cable	DALI	1-10 V	Notlicht 1h/3h Batterie & DALI EM light with 1h/3h battery & DALI	
	L	weiß oder grau white or grey	(A) Netz mains	Netz mains	Netz mains & charging battery	
	N	blau blue	(N) Neutralleiter neutral	Neutralleiter neutral	Neutralleiter neutral	
		grün-gelb green-yellow	(PE) PE ground	PE ground	PE ground	
D1+ DA+	D+	schwarz black	(C) DALI	+ Pol 1-10 V	DALI	
D2- DA-	D-	braun brown	(B) DALI	- Pol 1-10 V	DALI	

D Beiliegende Sicherheitshinweise sind unbedingt einzuhalten. Technische Änderungen vorbehalten. Montageanleitung aufbewahren.

GB The enclosed directions for safety must be observed. We reserve the right to make technical modifications. Retain the operating instructions.

F Le respect des instructions de sécurité ci-jointes est impératif. Sous réserve de modifications techniques. Conserver le mode d'emploi.

NL De bijgevoegde veiligheidsinstructies moeten in acht genomen worden. Technische wijzigingen voorbehouden. Bewaar de gebruiksaanwijzing.

E Deben observarse las instrucciones de seguridad adjuntas. Cambios técnicos reservados. Conserve las instrucciones de montaje.

I Osservare le segnalazioni di sicurezza allegate. Modifiche tecniche riservate. Conserva le istruzioni di montaggio.

S Bifogade säkerhetsanvisningar måste beaktas noggrant. Tekniska ändringar förbehålles. Spara bruksanvisningen.

TR Ekteki Emniyet Kurallarına kesinlikle uyunuz. Teknik değişiklikler saklıdır. Montaj talimatlarını saklayın.