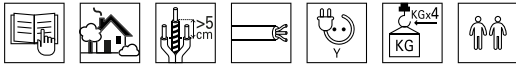
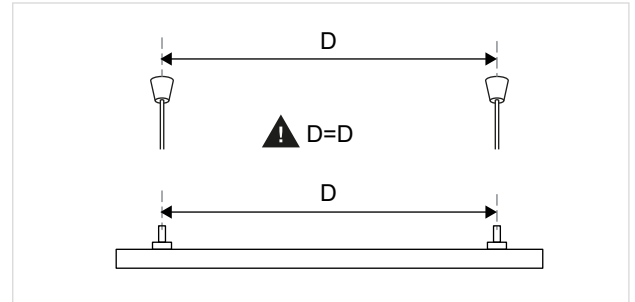


TRACK 3P

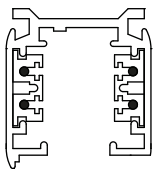
48 V STROMSCHIENEN-SYSTEM | TRACK SYSTEM
VERLÄNGERUNG STANGENABHÄNGUNG
EXTENSION ROD SUSPENSION



SCHMITZ
WILA

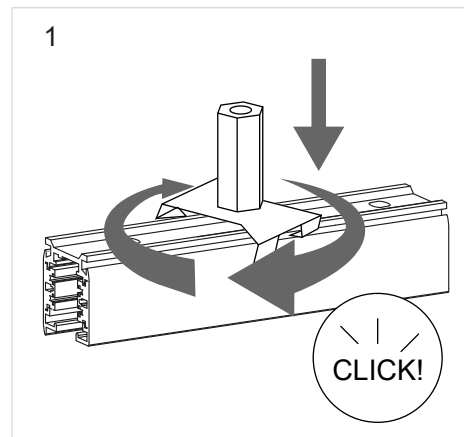
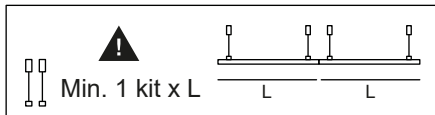


178-808

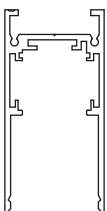


3-PHASE EURO
STANDARD

3-PHASE EURO
DALI



177-808



48V TRACK

